

ART @ WORK LOOKBOOK

/// CONTACT

ALLIE HEIMOS
ASSISTANT DIRECTOR, MEDIA & COMMUNICATIONS
ALLIE@ARTSWORCESTER.ORG

/// OUR GALLERIES

44 PORTLAND STREET
508-755-5142
ARTSWORCESTER.ORG
@ARTSWORCESTER

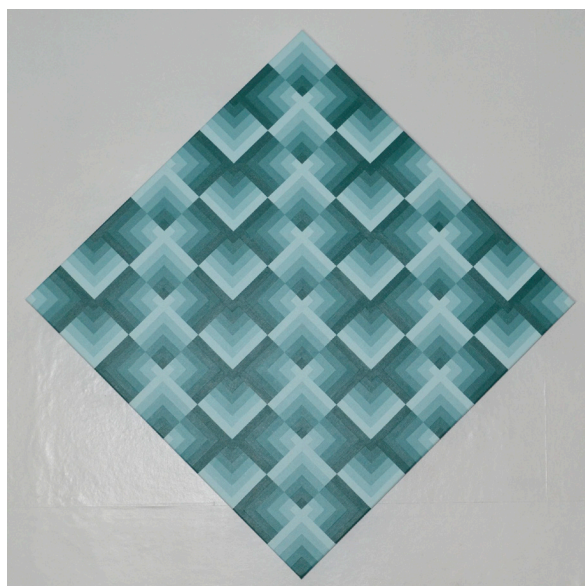


/// LESLIE BREAUT

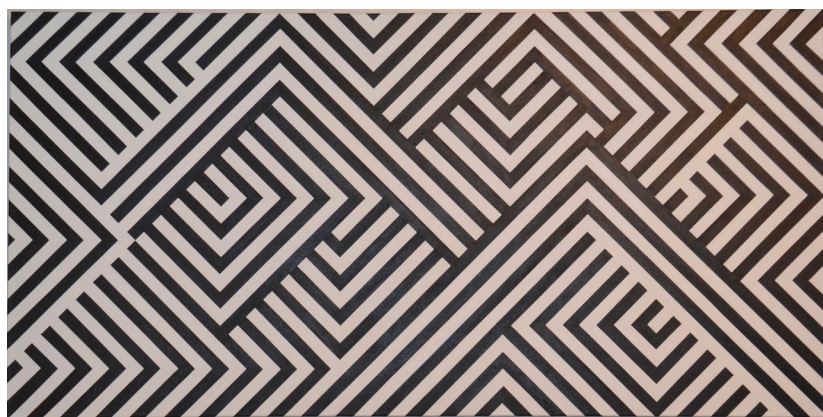
DOUGLAS, MA



Birches, 2023-7, acrylic on canvas, 20" x 40"



2023-2, acrylic on canvas,
34" x 34"



22-1, acrylic on canvas, 24" x 48"



/// DEBORAH DRUMMOND

SUDBURY, MA



Taking Measures, acrylic on canvas, 18" x 24"



Every Measure of Itself, acrylic on canvas, 18" x 24"



Improvisation,
acrylic on canvas, 24" x 24"

/// KATIE GOLDSTONE

WESTBOROUGH, MA



Rising Sun, mixed media, 14" x 14"



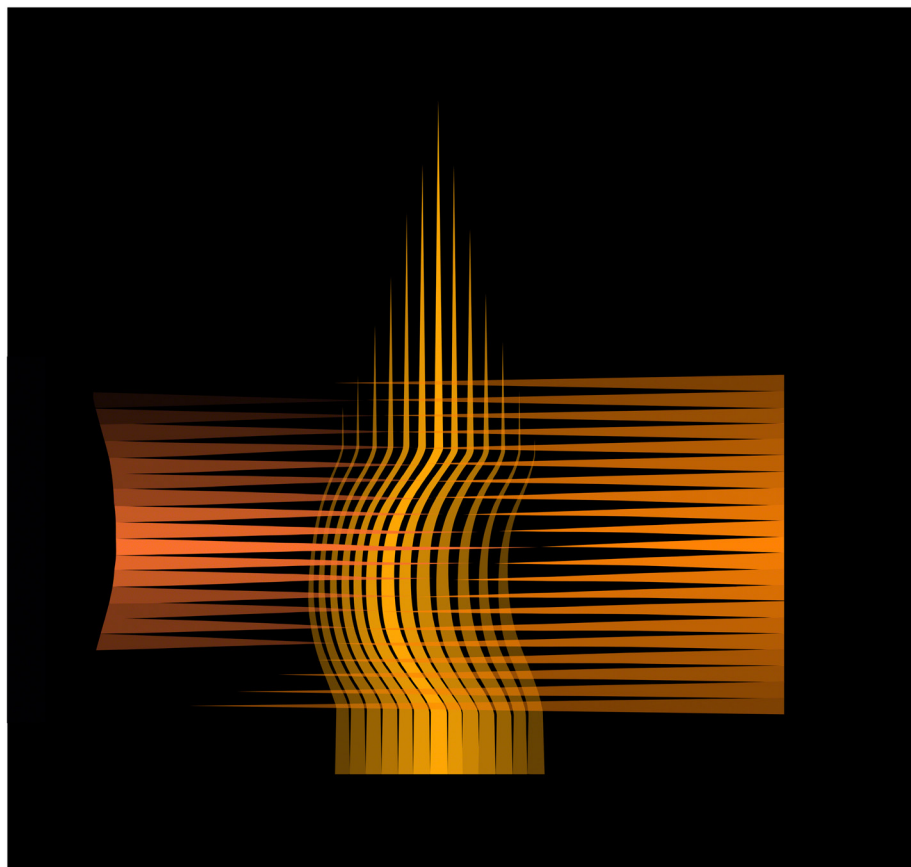
Blue Caverns, mixed media, 18" x 24"



Topsy Turvy, mixed media, 24" x 18"

/// GARRY HARLEY

LOWELL, MA



Equipose No. 1

1/100

Garry D Harley 2019 ©

(clockwise from top left)

Equipose No. 1,
archival pigment ink on paper,
24" x 24"

Red Steps to a Sunrise No. 1,
archival pigment ink on paper,
23 1/4" x 23 1/4"

Grey Blue Composition- Silver No. 1,
archival pigment ink on canvas,
silver leaf, 36" x 36"



Oxonia Milla Series - Red Steps to a Sunrise No. 1

1/100

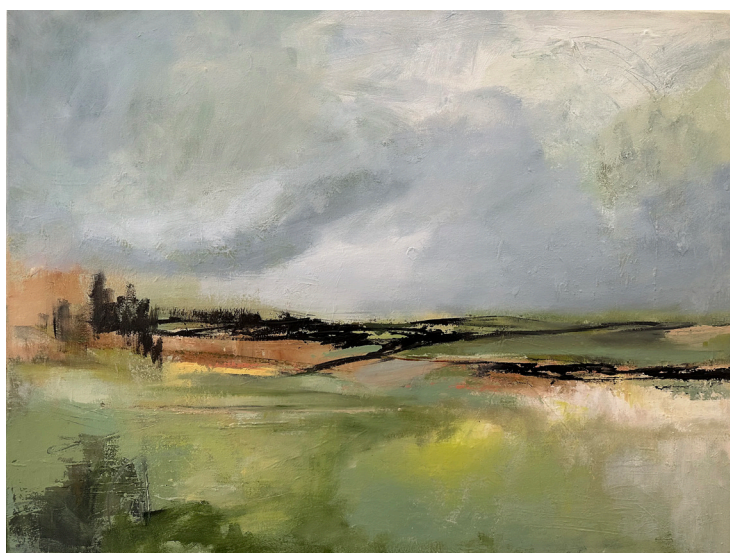
Garry D Harley 2022 ©

/// LISA HAYDEN

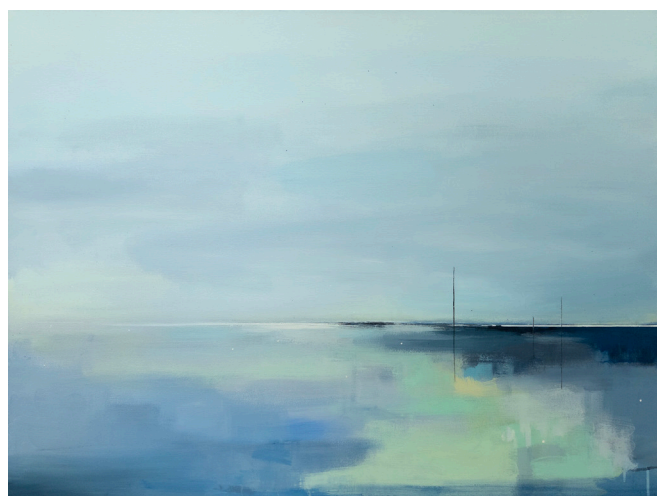
NORTHBOROUGH, MA



Gentle Hills, acrylic on canvas, 24" x 36"



While Wandering, acrylic on canvas, 30" x 40"



Harbor Memory, acrylic on canvas, 30" x 40"

/// DESMOND JOHNSON

RUTLAND, MA



Moon over New London Light,
photograph on archival fine art
paper, 16" x 20"



Running Colors, photograph on archival fine
art paper, 16" x 20"



The Bluff MV, photograph on archival fine
art paper, 16" x 20"

/// LYDIA KINNEY

GREENFIELD, MA



(clockwise from top left)

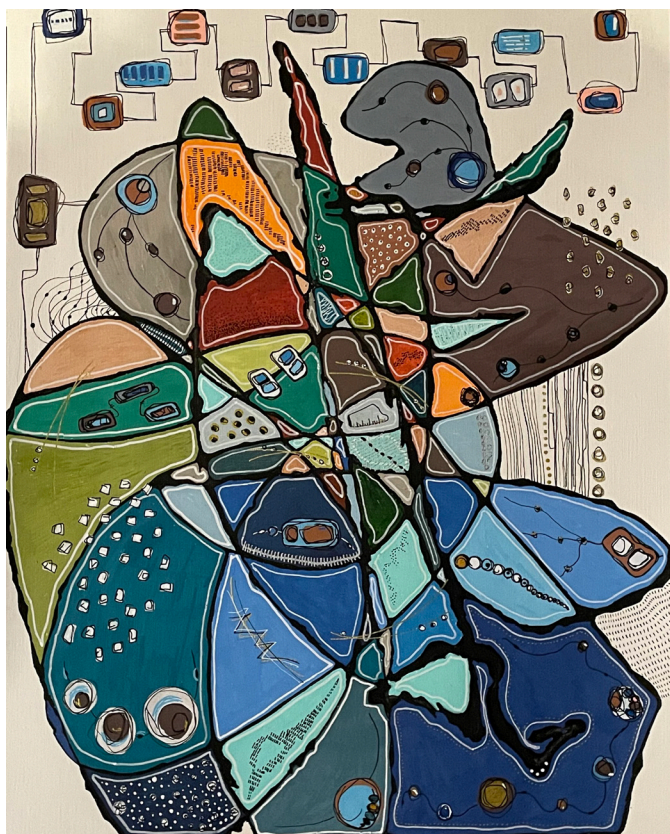
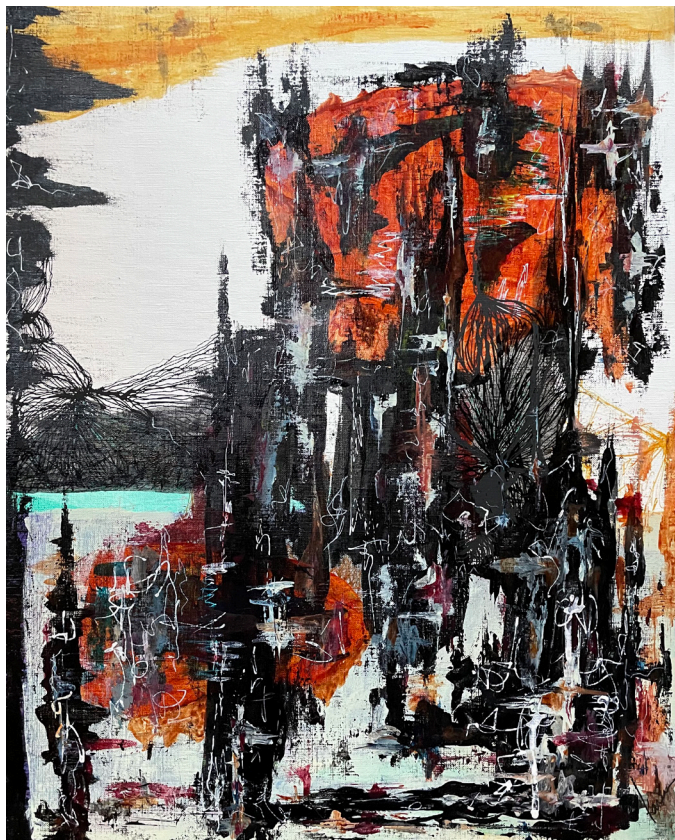
Amethyst, acrylic on canvas, 48" x 36"

Banner, acrylic on canvas, 40" x 30"

Curtain, acrylic on panel, 30" x 24"

/// KARIN KNAPIK-CLOUTIER

BROOKFIELD, MA



(clockwise from top left)

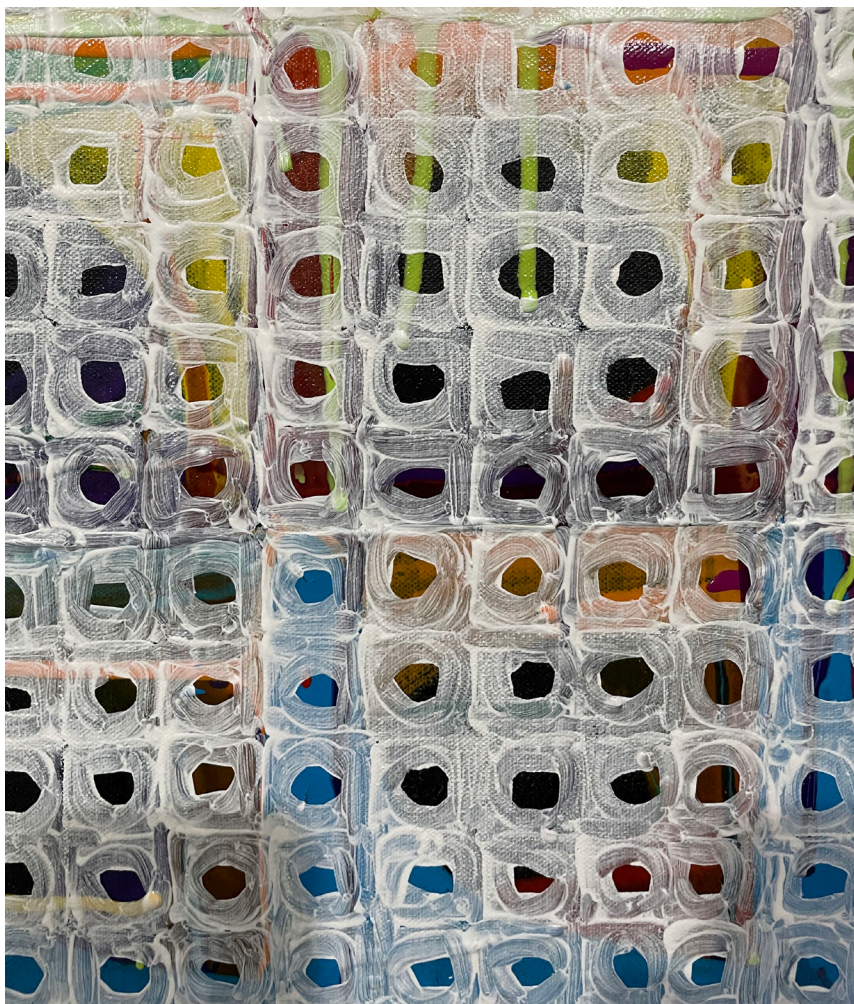
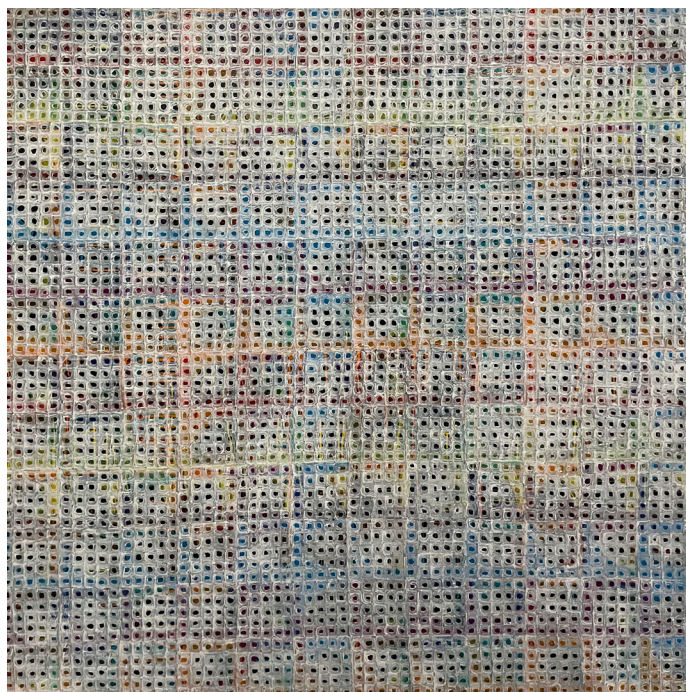
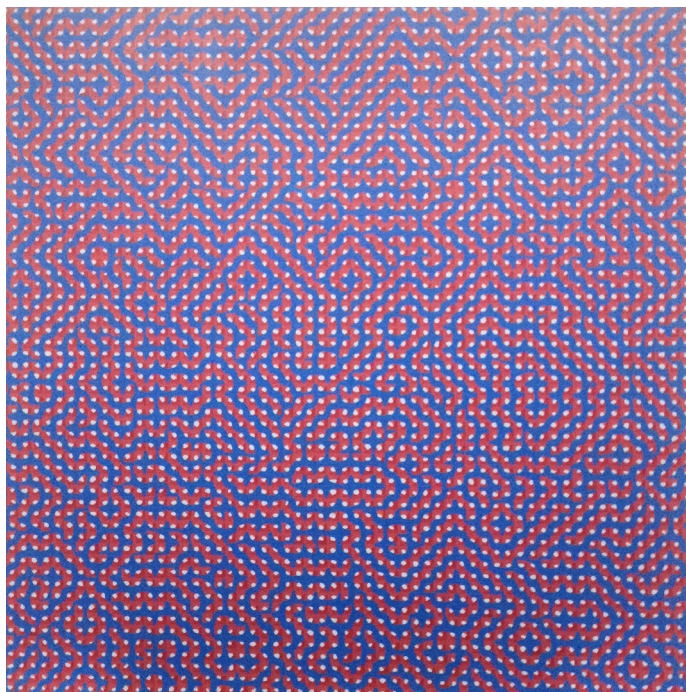
Standing Next to Tomorrow, acrylic on canva-paper,
20" x 24"

Maximum Capacity, acrylic on canva-paper,
20" x 24" framed

Station 7, acrylic on canva-paper,
20" x 24" framed

/// RICHARD KRAVITZ

WORCESTER, MA



(clockwise from top left)

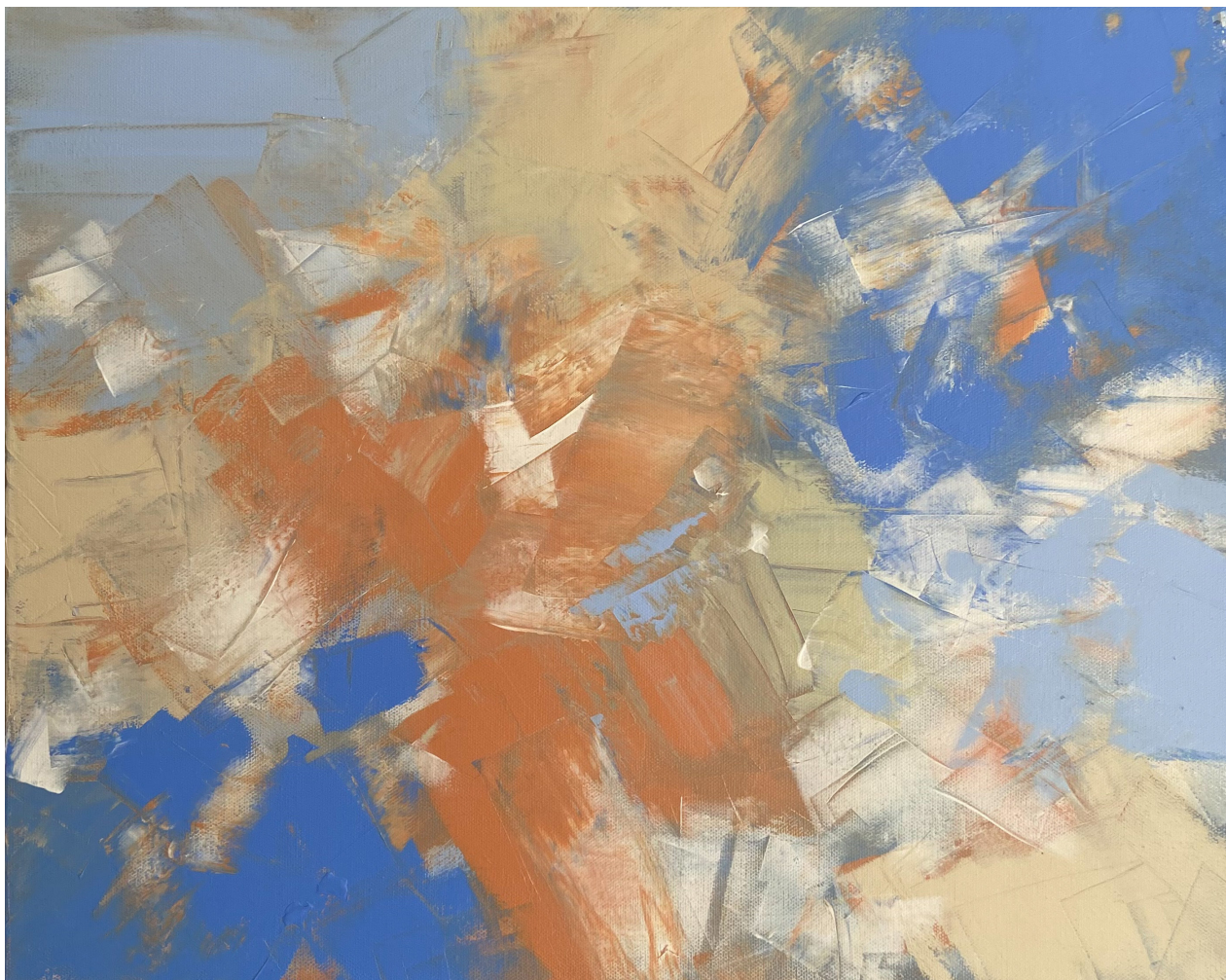
Untitled (1), acrylic on canvas, 60" x 60"

Untitled (2), acrylic on canvas, 60" x 60"

Untitled (2) (detail)

/// DENISE LAFER

MILFORD, MA



Run Away with Me, acrylic, 16" x 20"



Illusion,
mixed media, 16" x 20"

/// TERRY LAMACCHIA

WORCESTER, MA



Castleton on Hudson Bridge,
acrylic paint, digital photograph, and oil paint stick on canvas, 40" x 60"



Alone in Boston Tunnel,
acrylic paint, digital photograph, and oil paint stick on canvas, 20" x 52"



Slanted Bridge,
acrylic paint, digital photograph, and oil paint stick on canvas, 24" x 60"

/// MADELEINE LORD

DUDLEY, MA



(clockwise from top)

Winter Oaks, woodcut print on rice paper, 24" x 44" framed

Chinle Wash, woodcut print, 25" x 34" framed

Grand Canyon, woodcut print, 40" x 28" framed

/// MELANIE DAI MEDEIROS BARRINGTON, RI



(clockwise from top left)

Boyden Heights in July, oil on gallery wrap canvas, 24" x 24"

August on the East Bay Bike Path, acrylic with handmade paper on gallery wrapped canvas, 24" x 12"

Little Compton, RI, acrylic on gallery wrap canvas, 36" x 36"

/// CHRIS NICHOLSON

CONCORD, MA



Folded Paper (4 Folds), No. 3, oil on board, 24" x 33"



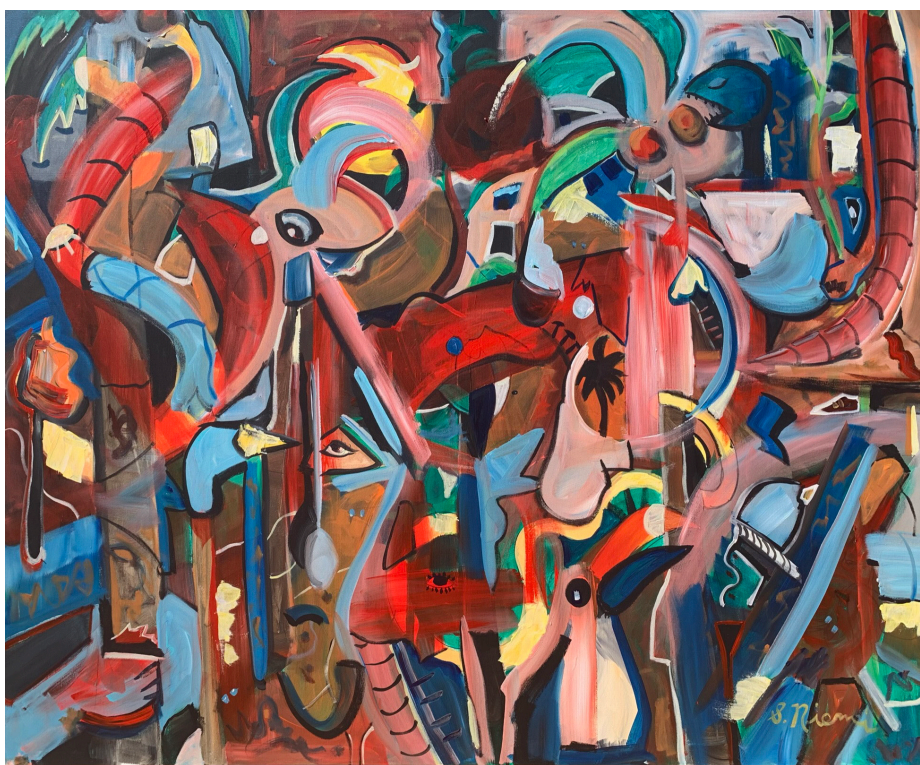
*6 Lines, No. 2,
oil on board, 27.25" x 40"*



5, No. 2, oil on board, 22" x 74"

/// SCOTT NIEMI

FITZWILLIAM, NH



(clockwise from top left)

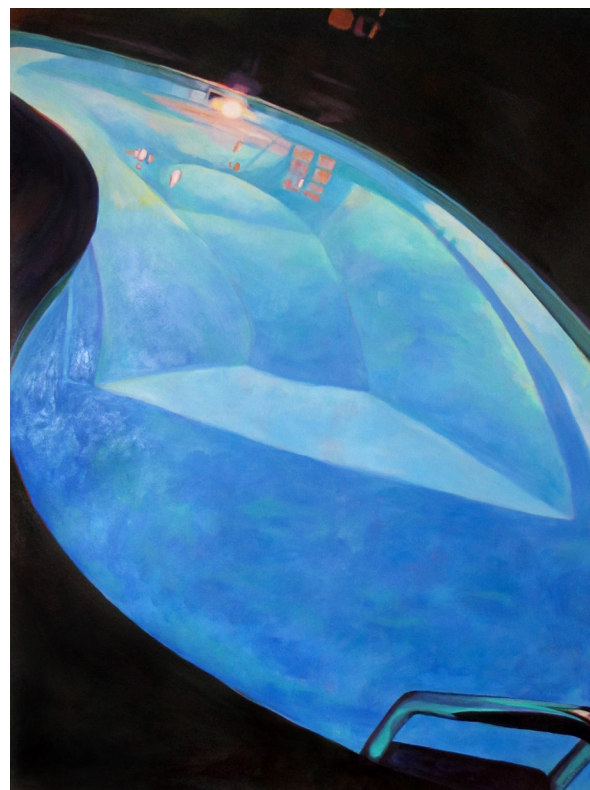
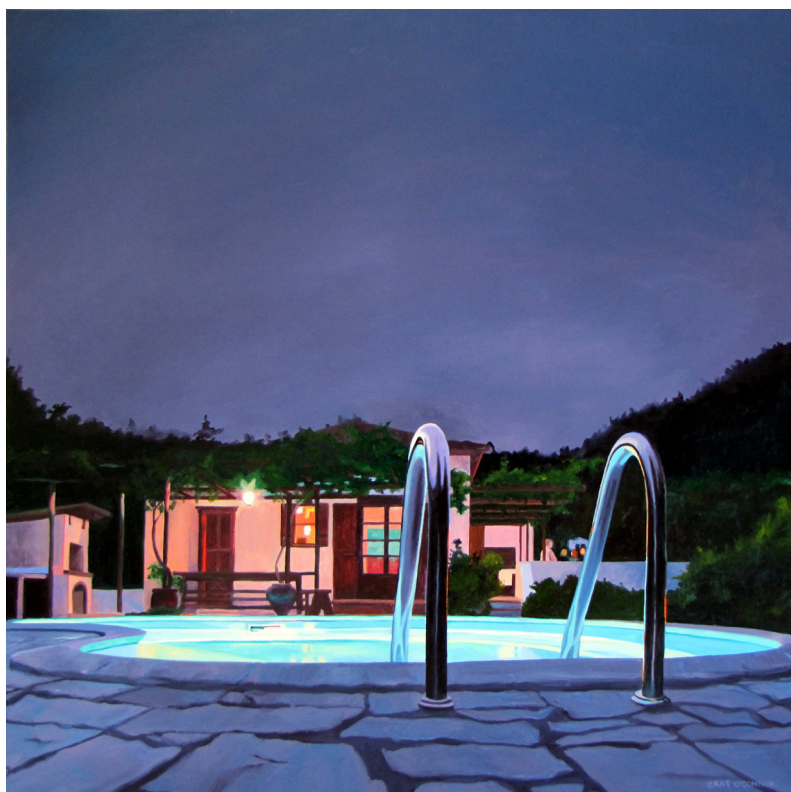
Yearning, acrylic on gallery wrapped canvas, 30" x 15"

Secret Guardians, acrylic on gallery wrapped canvas, 48" x 60"

Where the Wild Things Are, acrylic on gallery wrapped canvas, 48" x 60"

/// KAT O'CONNOR

WORCESTER, MA



(clockwise from top left)

From the Other Side, oil on
linen on cradled wood panel,
22" x 22"

Tilt, acrylic on paper,
28 3/8" x 21 1/4"

Round Nine, oil on paper,
21" x 28"

/// MELISSA PARENT

BROOKFIELD, MA



(clockwise from left)

Ultraviolet Night, mixed media acrylic, 24" x 48"

Harvest, mixed media collage, 22" x 26"

In September, mixed media collage, 22" x 26"

/// LOUISE PIGOTT

SOUTHBRIDGE, MA



New Beginnings, acrylic, 30" x 40"



A Peek Above, acrylic, 24" x 48"



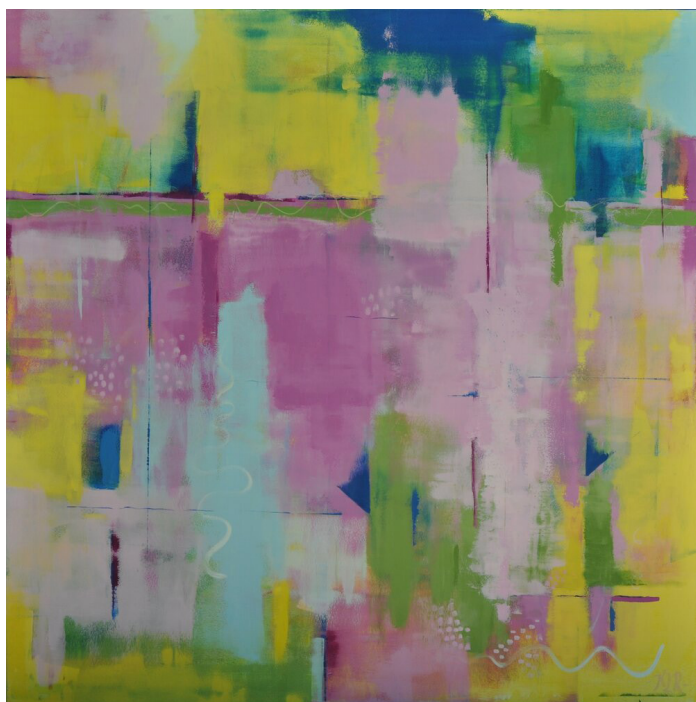
Glistening Lavender,
acrylic, 24" x 48"

/// KAREN REID

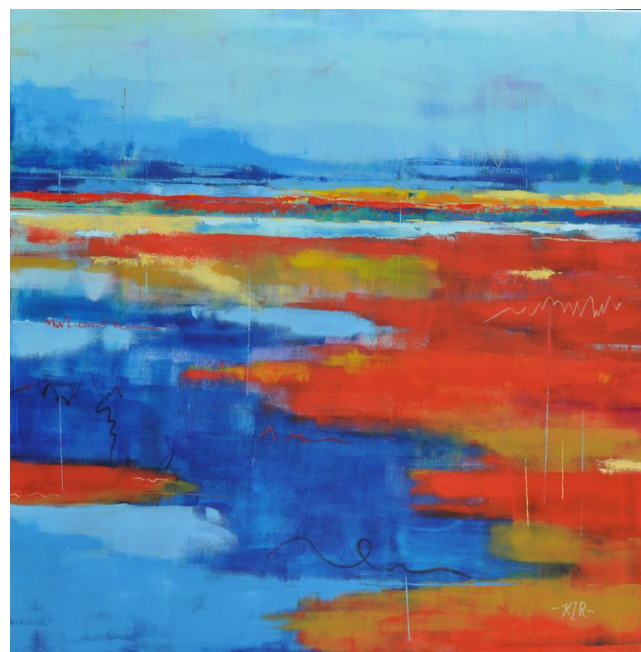
OXFORD, MA



Horizontal Response, oil and wax on canvas, 30" x 40"



Light Conversation, oil and wax on canvas, 60" x 60"

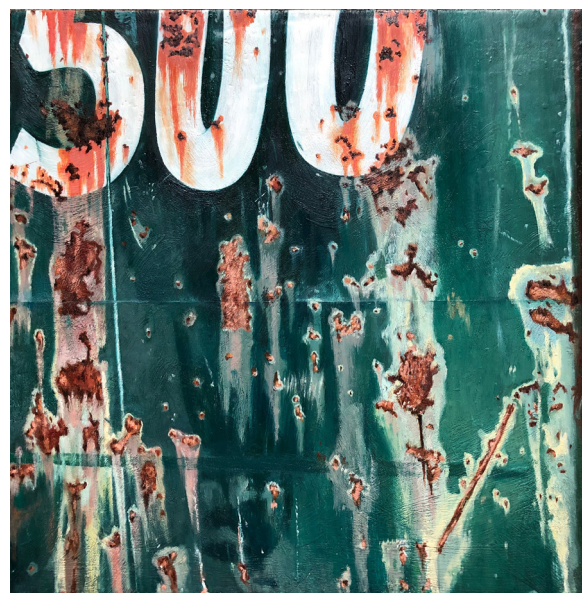


Blue Calm, oil and wax on canvas,
60" x 60"



/// TRACY SPADAFORA

WESTBOROUGH, MA



(clockwise from top left)

Dumpster 508-887, oil and encaustic on braced birch wood panel, 24" x 18"

Dumpster 1-800, oil and encaustic on braced birch wood panel

Dumpster 500, oil and encaustic on braced bird wood panel, 24" x 24"

/// CATHY WEAVER TAYLOR

UPTON, MA



Berkshires,
aluminum print,
24" x 30"



Blackstone Canal,
aluminum print,
20" x 30"

/// KATIE VOYT

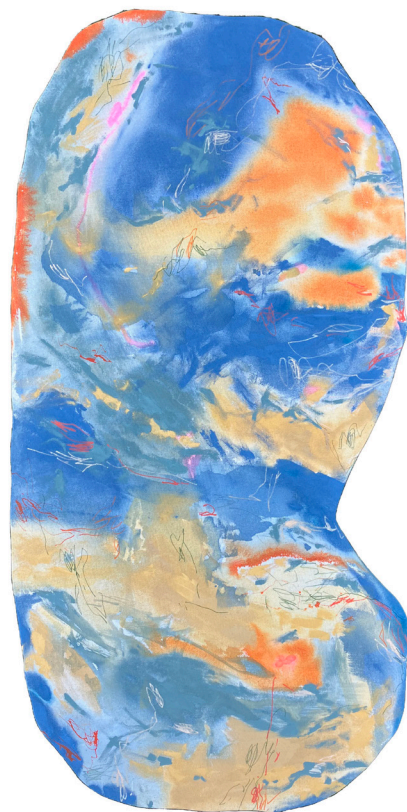
SOUTH YARMOUTH, MA

(clockwise from top left)

Dark Shoreline, acrylic on canvas, 18" x 13.5"

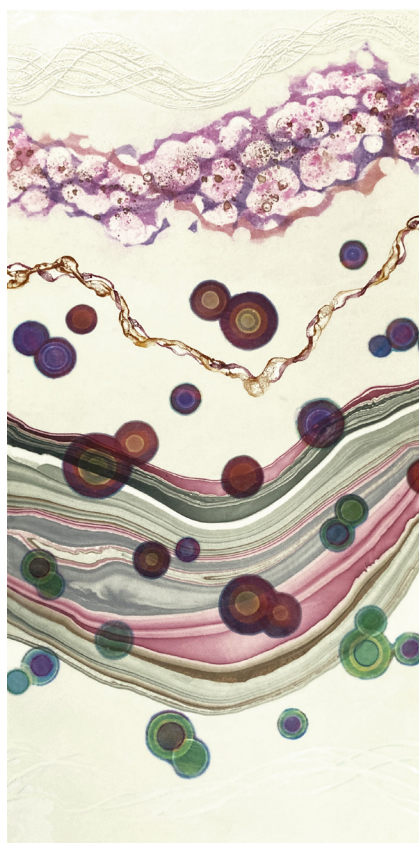
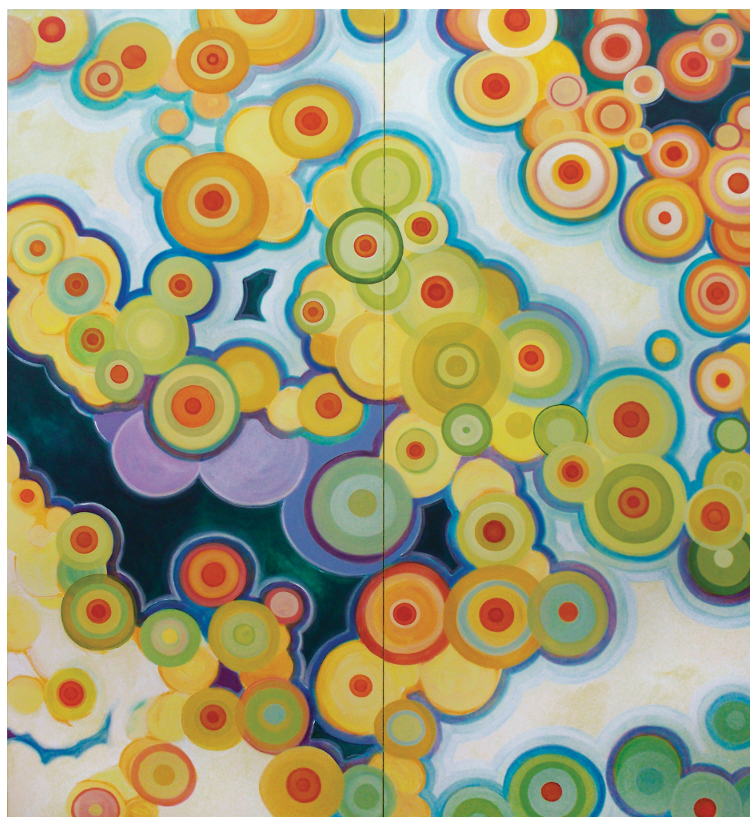
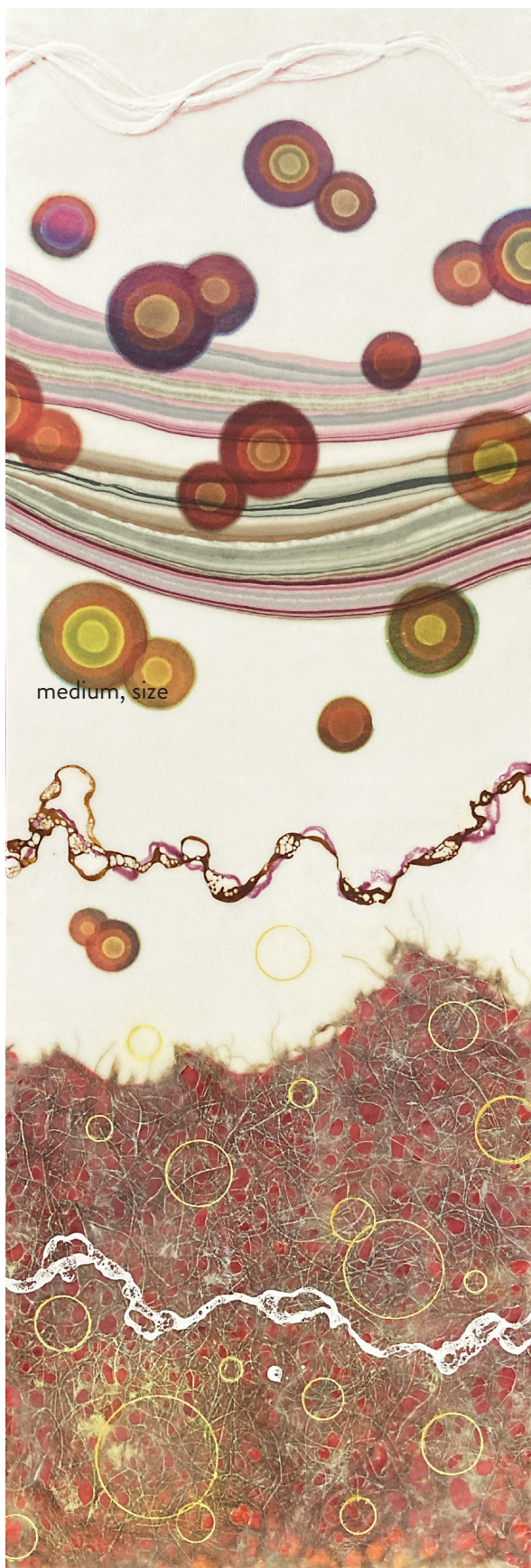
Something That You Are Not Likely To Tell Me, acrylic on canvas, 49" x 25"

Acquisition, mixed media on canvas, 43" x 19"



/// NEIL WILKINS

CLINTON, MA



(clockwise from left)

laminae/Re: 36,
encaustic with mixed
media on wood, 36" x 12"

Variations, Diptych,
acrylic on wood,
78" x 72"

laminae/transience: 53,
encaustic with mixed
media on wood,
48" x 24"