

# Call for Exhibition Proposals 2022-2023

## ArtsWorcester

44 Portland Street, Worcester MA

CALL FOR PROPOSALS	2
GENERAL REQUIREMENTS AND INFORMATION	3
OPPORTUNITY DETAILS	5
EXHIBITION VENUES	8
FLOORPLANS AND VENUE IMAGES	11
2022-2023 EXHIBITION COMMITTEE	20
HELPFUL LINKS	21

**For any questions not answered in this packet, please email [alice@artsworcester.org](mailto:alice@artsworcester.org) or call the gallery at (508) 755-5142.**

**ArtsWorcester will host a panel on how to submit successful proposals:**

**Saturday, March 26, 3:00-6:00 PM**

**44 Portland Street, Worcester MA**

Come talk with Nancy Burns, Stoddard Associate Curator of Prints, Drawings and Photographs at the Worcester Art Museum—a long-time ArtsWorcester selection committee member. Alice Dillon, ArtsWorcester Associate Director, and Juliet Feibel, ArtsWorcester Executive Director, will field questions along with Burns.

Learn the process for applying, what successful proposals have in common, and about what the selection committee looks for when reviewing submissions. Join your fellow artists, ask questions, and learn about what's new this year!

**[Pre-register here.](#)**

# CALL FOR PROPOSALS

## Solo Exhibitions, Artist Shoeboxes, and Member-Curated Exhibitions

Submission Deadline: April 26, 2022

Notifications: mid-June, 2022

ArtsWorcester invites proposals for solo shows for our 2022-2023 gallery season and corporate art program. With the exception of member-curated exhibitions, eligible proposals are evaluated by a panel of seven volunteers, all with extensive experience as curators, educators, collectors, and/or artists. All proposals are viewed anonymously.

Solo exhibitions may be placed in our galleries in the Printers Building, our partner spaces at the Davis Art Gallery or The Hanover Theatre, or in our corporate art program. Multiple exhibitions may be produced in the same gallery space (for example, two solo exhibitions simultaneously in the West Gallery).

New this year, Artist Shoeboxes and Member-Curated Exhibitions are opportunities for artists who are looking to produce compact installations or highlight a limited number of artworks. Member-Curated Exhibitions offer experienced artists the chance to curate, install, and promote small exhibitions of two-dimensional work.

New and traditional media, fine craft, and site-specific installations are all welcome. Although you may not have seen something done at ArtsWorcester before, that doesn't mean it can't be done. Our space and staff are flexible, and we look forward to artists pushing the boundaries of our four walls. Contact [alice@artsworcester.org](mailto:alice@artsworcester.org) with any questions.

Proposals should be specific regarding presentation and installation plans. During installations of selected exhibitions, artists have the opportunity to work with and learn from our exhibition designer. All installations take place during the work week during normal business hours.

As part of this year's call for solo exhibitions, we seek proposals eligible for the **Present Tense Prize**, awarded to an artist whose work exemplifies new practices, artistic risk-taking, and excellence in execution. In addition to a solo exhibition, the Present Tense Prize winner receives an award of \$1,000.

*Artists interested in exhibiting as a group should contact the gallery for more information. All questions can be directed to [alice@artsworcester.org](mailto:alice@artsworcester.org).*

## GENERAL REQUIREMENTS AND INFORMATION

- Current ArtsWorcester [membership](#) is required for all artists at the time of submission. There is no geographic restriction on membership, but artists (or their proxy) must deliver and pick up all artwork. If membership fees are a financial obstacle to participation, please write [alice@artsworcester.org](mailto:alice@artsworcester.org) or ask in the galleries about the Pay It Forward Fund.
- Artists must have exhibited in at least one members' or juried exhibition at ArtsWorcester prior to submitting an exhibition proposal.
- All submissions must be made electronically using Submittable. Hard-copy and email submissions will not be accepted.
- Artists may submit one solo exhibition proposal.
- Artists may submit different proposals to the different exhibition options available.
- The committee prioritizes proposals from artists who have not had a solo exhibition at ArtsWorcester in the past three years.
- Exhibited works must have been completed within the last five years and not previously shown at ArtsWorcester.
- Proposals must be original, and must not have been submitted to any prior exhibition calls at ArtsWorcester.
- Artists receiving solo exhibitions are required to give an artist talk or equivalent public programming online or in-person as public health permits.
- Artists under final consideration for solo exhibitions may be asked to bring in examples of proposed works for in-person viewing.
- Artists earn 60% on sales made through our galleries. Artists exhibiting through our corporate art program also receive loan fees for their artwork.
- While on view through ArtsWorcester, all artwork is insured for its market value.

### Submission Guidelines: What we need from you

- An exhibition proposal, not to exceed 175 words, that describes the scope of your proposed exhibition.
- Answers, each not to exceed 100 words, to the following questions: *How complete is your proposed exhibition? What one to three ideas, concepts, or experiences does this body of work/ exhibition communicate? What inspirations or traditions guided or influenced this body of work/ exhibition? How are the methods or techniques used important to this body of work/ exhibition? Does your proposal require any special installation needs?*
- A curriculum vitae or artist resumé. [Click here for examples of CVs for both gallery-based and public artists.](#)
- 5 images of works (each a maximum of 2 MB, or 300 dpi at 100% size; video and performance artists should include 5 thirty-second clips).
- Artists seeking a solo exhibition may also include:
  - 2 additional detail images of two-dimensional work or
  - 3 additional alternate views of three-dimensional works

It is important for all artists to be able to communicate their vision not only through artwork itself, but in writing. We cannot effectively promote or produce your exhibition without hearing your words.

We suggest writing your answers in advance, and showing them to a friend who isn't as involved in your work as you are. Ask them what makes sense and what needs more clarity.

The committee looks for the ability of an artist to talk about their work to an audience, not great writing skills. Your proposal will be edited for grammar and punctuation, not content, by ArtsWorcester before the committee sees it.

*After submitting your proposal, you will receive a confirmation email from Submittable. If you do not receive an email please contact the gallery to confirm receipt: [alice@artsworcester.org](mailto:alice@artsworcester.org) or (508) 755-5142*

## OPPORTUNITY DETAILS

### **Solo Exhibitions**

Solo exhibitions feature the artwork of one artist. They may be placed in our main galleries in the Printers Building, our partner spaces at the Davis Art Gallery or The Hanover Theatre, or in our corporate art program. Multiple exhibitions may be produced in the same gallery space (for example, two solo exhibitions simultaneously in the West Gallery). Any and all media are welcome, including site-specific installations.

Submit here!

### **Artist Shoebox**

Help us make use of our moveable walls, or take over our “window gallery!” These walls can be used to section off a gallery into 3-5 smaller “shoebox” spaces each dedicated to one artist's work. This opportunity is perfect for a site-specific installation or series that may not be large enough to fill an entire gallery space.

Though these shows occupy a small area of a gallery and invite the creation of a unique environment, they are reviewed by the same committee with the same standards as solo exhibitions.

If you plan to apply for a solo exhibition at ArtsWorcester in the future, bear in mind any work shown in a series/small installation show may not be shown here again. Our policy is, as always, never to show the same work twice. Please be mindful of future opportunities!

Submit here!

### **Member-Curated Exhibitions**

Member-Curated Exhibitions are an opportunity for artists to use their curatorial skills and gain independent, hands-on experience producing an exhibition. Located in ArtsWorcester's Central Corridor, these shows include at least 3-4 artist members' work, chosen by one curator. The curator may include their own artwork in the proposal.

Curators are responsible for communicating with participating artists, collecting, delivering, and retrieving artwork, providing an exhibition statement, and installing the exhibition in the Central Corridor. ArtsWorcester staff will be available for input on layout and to train the curator on the Arakawa hanging system.

Successful proposals should clearly state a curatorial vision for the space and the artists to be included. Curators should have experience working with ArtsWorcester and must demonstrate

their capacity to fulfill this leadership role. Proposals are welcome on a rolling basis, and will be evaluated by ArtsWorcester staff and volunteers.

All work must be wall-hanging and may not extend more than 12" from the wall. Artworks are hung on a secured Arakawa hanging system (track and wire) and D-rings. This space cannot accommodate free-standing or pedestal artwork. Further questions about what type of artwork is feasible in this space may be directed to [alice@artsworcester.org](mailto:alice@artsworcester.org).

Submit here!

## OPPORTUNITIES AT A GLANCE

	Solo Exhibitions	Artists' Shoebox	Member Curated Exhibitions
Gallery hours, free and open to the public	✓	✓	✓
Exhibition card design and printing	✓	✓ Shared card with other highlighted artists	⊘
Exhibition website	✓	✓	⊘
Public Reception	✓	✓	⊘ Artists may organize their own reception. AW provides free gallery rental for those events.
Artist talk or similar programming required	✓	⊘	⊘
Artist required to install traditional artwork	⊘ Artists may participate as desired	⊘ Artists may participate as desired	✓
Artist required to install site-specific, less conventional artwork	✓	✓	⊘ (not feasible for this space)
Miscellaneous notes	For exhibitions at The Hanover Theatre ONLY: all artwork must be wall-hanging and mountable by D-rings		All artwork must be wall-hanging and mountable by D-rings

# EXHIBITION VENUES

Floor plans of all venues available on page 11

## **ArtsWorcester**

East and West Galleries

44 Portland Street, Worcester

Our galleries are a state-of-the-art venue in a historic building, with nearly 2,000 square feet of exhibition space. We offer complete physical accessibility and professional installation materials including museum-quality lighting, audio visual capacity, and plywood wall backings allowing for heavy works. Moveable walls and full-length window treatments radically transform the space for each show. Exhibitions in this space are celebrated with a public opening reception as public health permits, and gallery hours are open to the public Thursdays - Sundays, 12-5 PM.

What's available here:

- Moveable walls
- Video projector on floor/pedestal level or suspended from ceiling
- Custom painted walls (see page 10 for painting details)
- Outlets
- Pedestals

## **ArtsWorcester at the Davis Art Gallery**

44 Portland Street, Third Floor, Worcester

The newly-renovated Davis Art Gallery is located on the third floor of the Printers Building. ArtsWorcester proudly programs exhibitions bi-annually in this space operated by Davis Publications. Flooded with natural light, its hardwood floors, pristine walls, and new lighting system are ideal for new and traditional media, craft, performance, and site-specific installations. Exhibitions in this space are celebrated with a public opening reception as public health permits, and gallery hours are open to the public Thursdays - Sundays, 12-5 PM.

What's available here:

- Video projector on floor/pedestal level
- Outlets
- Pedestals

## **ArtsWorcester at The Hanover Theatre**

Franklin Square Salon Gallery, 2 Southbridge Street, Worcester

The Franklin Square Salon Gallery at The Hanover Theatre is a high-ceilinged, historic room featuring refined architecture, and used by over five thousand visitors each year. It requires two-



dimensional, medium- to large-scale artwork appropriate for all audiences, including the supporters and corporate partners of The Hanover Theatre. All artworks exhibited in this space are installed using a secured Arakawa (track and wire) hanging system and D-rings. Exhibitions at the Franklin Square Salon Gallery are celebrated with public opening receptions as public health permits, and gallery hours are open to the public on Saturdays, 11 - 1 PM.

### **Central Corridor, Printers Building**

44 Portland Street, Worcester

Connecting ArtsWorcester's main galleries and WICN, the Central Corridor is also seen by Printers Building tenants and visitors. This space is available for Member-Curated Exhibitions, and is complete with gallery lighting and an Arakawa hanging system (track and wire).

### **Art-at-Work**

Our corporate art program places paintings, photographs, collages and mixed-media artworks into downtown businesses, activating environments, injecting creativity into the workplace, and benefiting clients, customers, employees, and artists alike. These venues are generally private offices closed to the public. Artists in our corporate art program receive loan fees for artwork exhibited, in addition to their commission on any sales made. Fees are determined according to client contract and artwork size.

Corporate art venues usually require two-dimensional works appropriate for professional settings, although there is an occasional need for large free-standing sculptures. Wall-hanging artworks exhibited in these spaces are installed using a secured Arakawa hanging system and D-rings.

## Painting gallery walls

Artists may paint select walls in ArtsWorcester's East and West Galleries. Artists should include their plan to paint in their exhibition proposal and, if selected, must communicate with the gallery in advance to ensure the success of their vision. Previous experience with commercial or residential painting is preferred, as artists are expected to do the painting. If more help is needed, artists must request assistance well before installation to schedule staff time. Artists may be asked to repaint the gallery walls white at ArtsWorcester's discretion.

All paint products used on gallery walls must be acrylic-based and flat (matte).

The following products cannot be used on gallery walls:

- Aerosol paint of any kind
- Oil-based paint, in liquid, aerosol, or stick form
- Gloss or semi-gloss paint
- Sharpie or permanent marker
- Sealant, aerosol or liquid

Artists must provide:

- Acrylic-based paint
- Brushes and rollers
- Paint trays
- Stir sticks

ArtsWorcester will provide:

- 2" painters' tape for floorboards and outlet covers
- One drop cloth
- White paint for touch-ups and repainting

# FLOORPLANS AND VENUE IMAGES

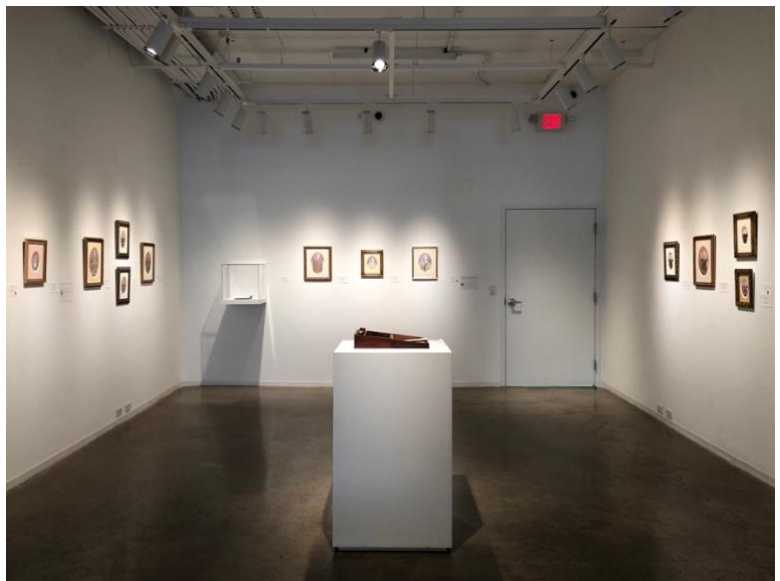
## ArtsWorcester- West Gallery

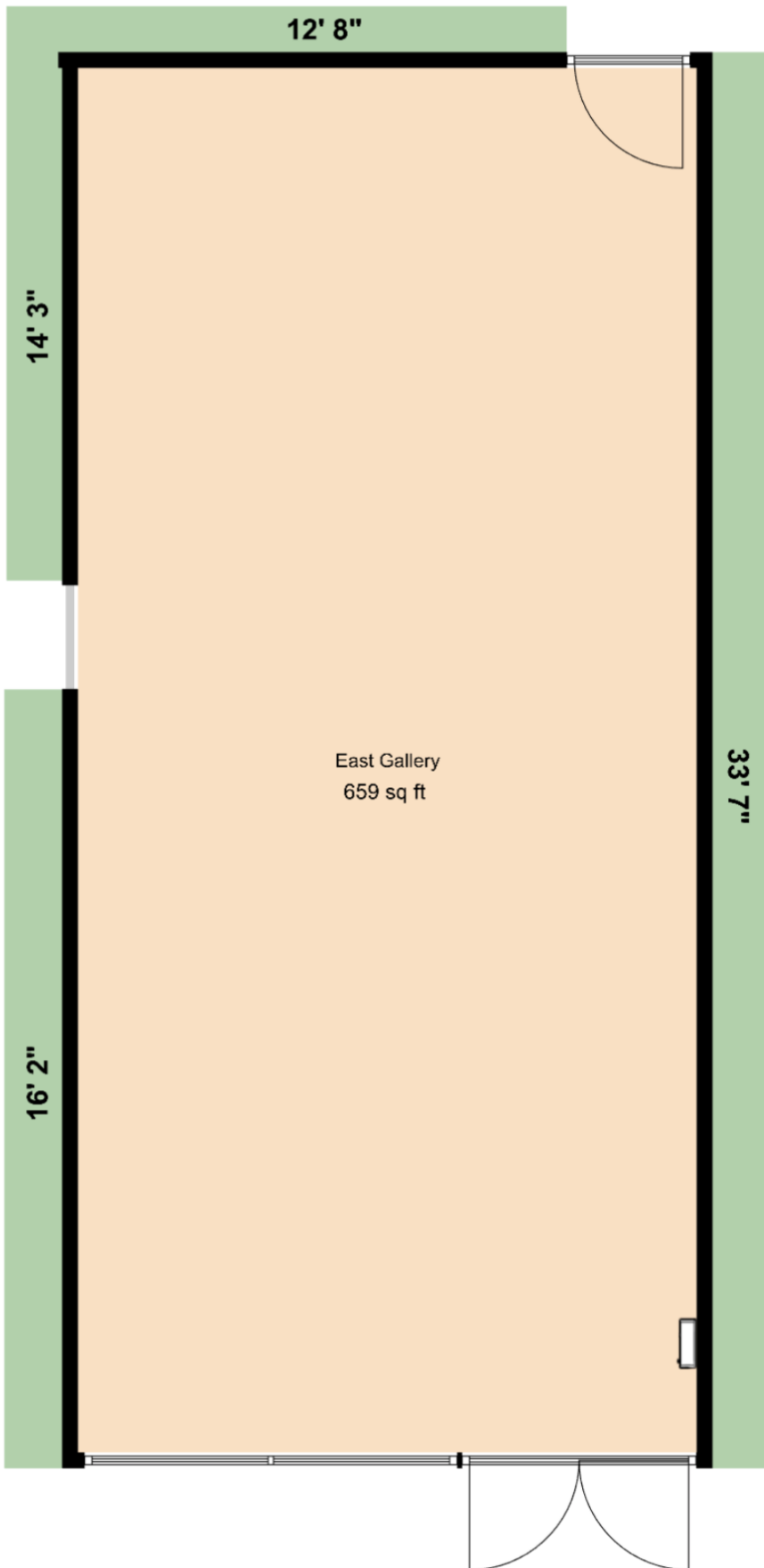







## ArtsWorcester- East Gallery





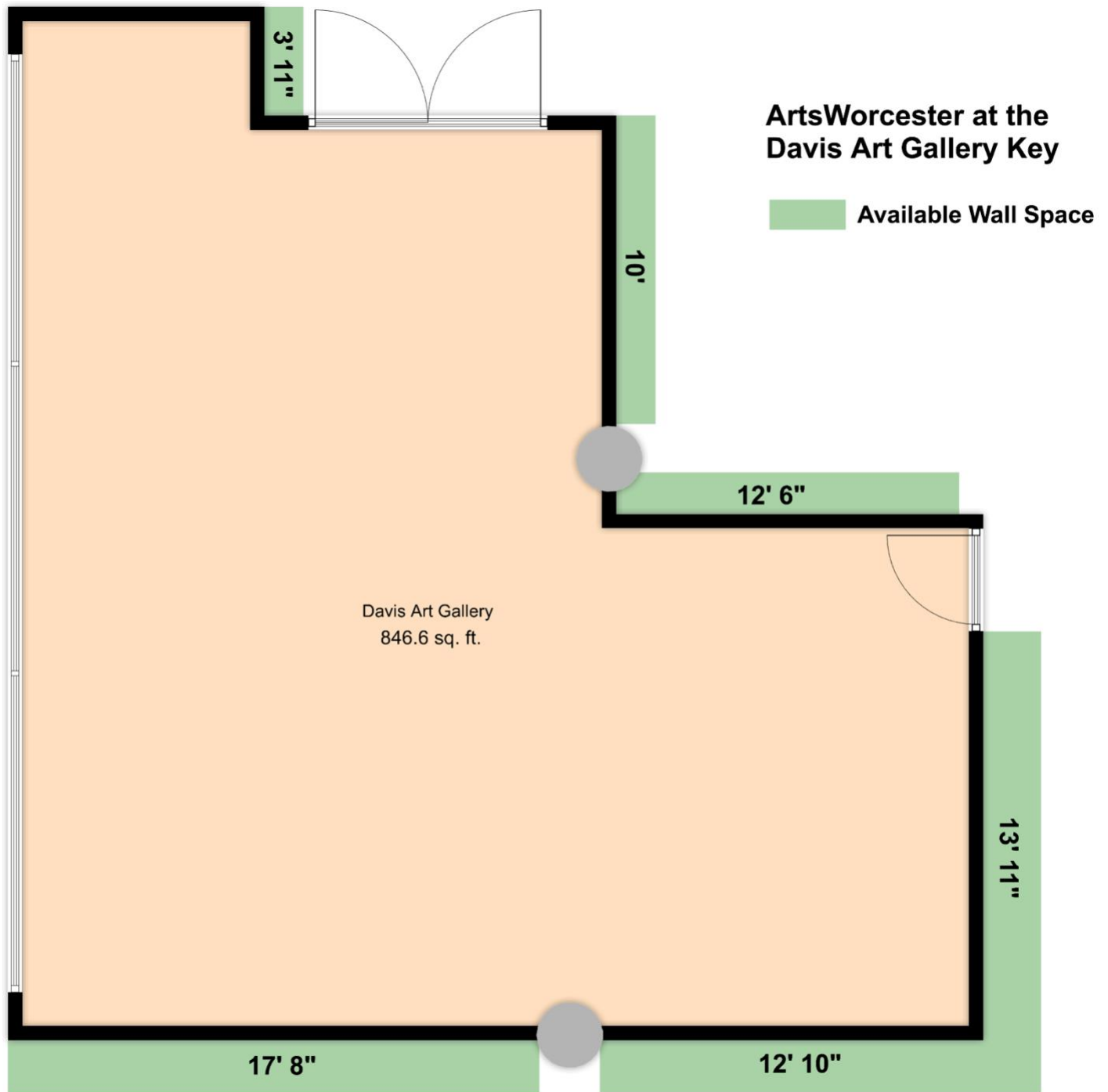
**ArtsWorcester  
East Gallery Key**

 Available Wall Space



## ArtsWorcester at the Davis Art Gallery





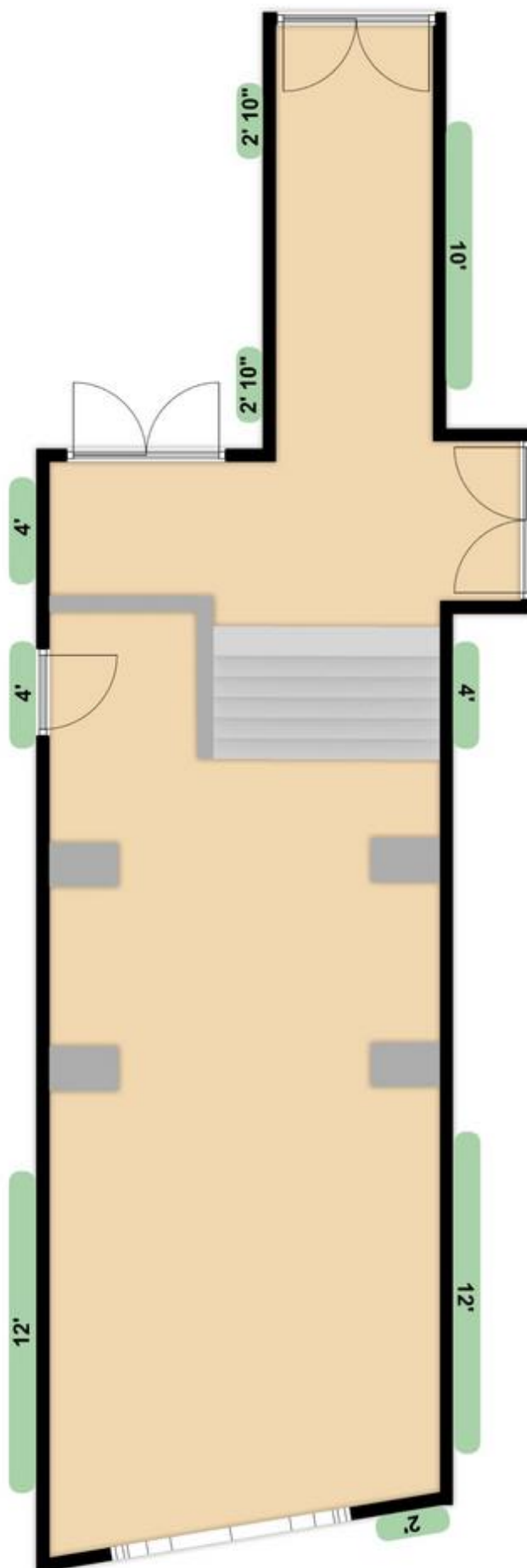


## The Hanover Theatre

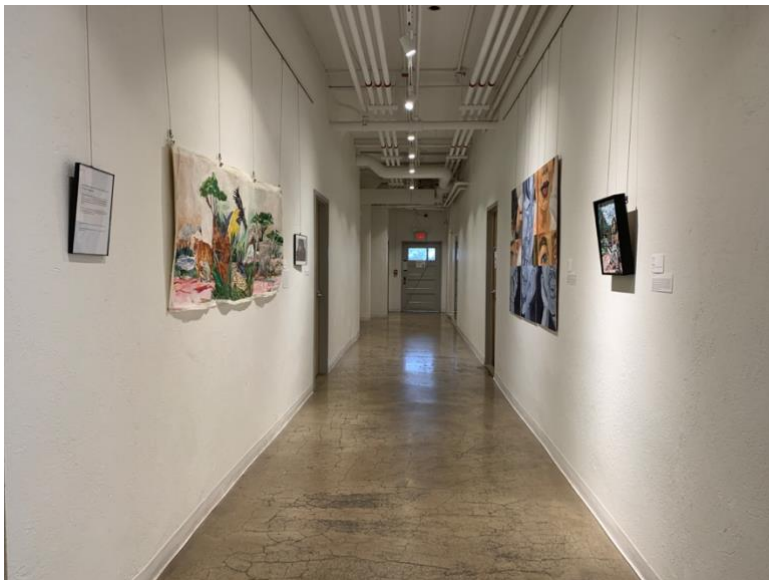


**ArtsWorcester at  
The Hanover Theatre's  
Franklin Square Salon**

 Available Wall Space



**Central Corridor**  
**Arakawa tracks are 15' 10" and 17' 6"**



## 2022-2023 EXHIBITION COMMITTEE

**Katie Block:** art consultant, co-founder of the Miller Block Gallery

**Ari / James Montford:** artist; curator; educator; faculty, Montserrat College of Art; former director, Edward Mitchell Bannister Gallery at Rhode Island College and faculty at the RISD Museum

**Victor Pacheco:** artist; educator; faculty, College of the Holy Cross; Art Matters fellowship recipient

**Marlene Persky:** member, ICA collection committee; board member and collection committee chair, Rose Art Museum; member, MFA Contemporary Art Advisory Committee; artist

**Jessica Roscio:** Director and Curator, Danforth Art Museum

**Toby Sisson:** Associate Professor and Program Director of Studio Art, Clark University; Collections Executive Committee, Worcester Art Museum; artist

**Lauren Szumita:** Curator, Fitchburg Art Museum

**Kristina Wilson:** Professor of Art History, Clark University; author; curator

## HELPFUL LINKS

[Register for the March 26, 2022 panel discussion on how to submit successful proposals, featuring Nancy Burns of the Worcester Art Museum and Alice Dillon and Juliet Feibel of ArtsWorcester.](#)

[Examples of artist CVs / resumes for both gallery-based and public artists.](#)

[Examples of successful proposals](#)

Good luck!